

# LW3-WM SERIES

## Architectural Linear Wall Mount LED Luminaire

Fixture Type:

Job Information:

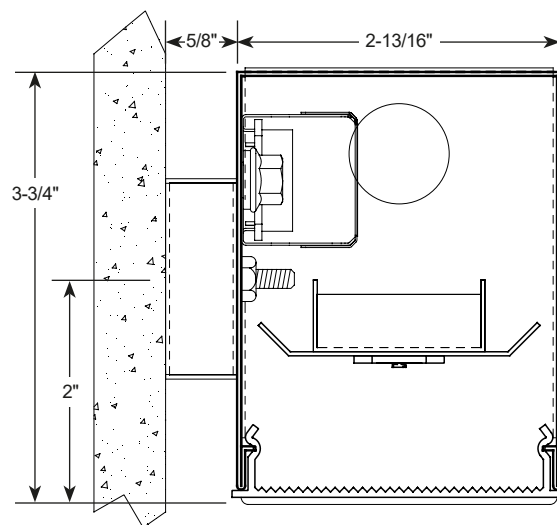


### FEATURES:

- Compact designed linear wall mounted LED luminaire.
- Complies with all ADA requirements for public spaces.
- Flat snap-in style acrylic diffuser closes off the bottom of the housing.
- Custom formulated high diffusion acrylic material allows for maximum light transmission while eliminating pixilation and hot spots.
- Mounts on two 5/8" wide wall mount brackets to space from the wall. May be mounted directly to most wall surfaces.
- Nominal 2Ft., 4Ft, or 8Ft. long modules.
- Digital LED technology provides high efficacy and energy efficiency.
- Multiple power and light levels are offered as standard to allow meeting design and energy needs per application. Custom factory set levels available on request.
- Lumen maintenance; Reported L70 (hours) and L80 (hours) > 60,000.
- CRI greater than 80.
- Tunable white feature optional.
- Fixture lumens per watt ratios up to 143.
- American made.



### CROSS SECTION:



## LW3-WM SERIES

Ex: LW3-WM-4-3800-35K-HTA-1%-UNI-EM10

Ex: LW3-WM-4-3800-35K-HTA-1%-UNI-EM10

LW3						UNI			OPTIONS		ACCESSORIES
SERIES	NOMINAL LENGTH (FT)	NOMINAL LUMENS	COLOR TEMP	DIFFUSER	DRIVER	VOLTAGE	STANDBY MODULES	INTEGRAL LIGHTING CONTROLS			
LW3-WM Architectural Linear Wall Mount LED Luminaire	2 24" Length	24"L	2100	HTA High Transmission Acrylic	1% 0-10V 1% Dimming	UNI	EM10	O4 Wattstopper FS-155-1 mounts internally with only the PIF dome visible.			
	4 45" Length		2300								
			2500								
	8 96" Length	3200	50K Upon Request	AW Acrylic White	As Specified		EM12 Available 4ft. and 8ft. Modules Only	O7 Leviton ZLS05-ILW mounts internally with only the PIF dome visible.			
		2100	TW 27K-65K								
	3800										
	4500										
		5000									
		6300									
		7600									
	96"L	12,000									
		XXXX Custom Lumen Package. Contact Factory.									

### LED MODULES:

- High performance linear configured LED module boards.
- Each board consists of multiple mid-power, high efficacy LEDs in a precise layout eliminating the need for supplemental heat sinking.
- The boards produce an even and diffuse light which maximizes optical efficiency.
- Compatible with the dimming performance of the LED driver.
- Color temperatures available: 3000K, 3500K and 4000K.
- Upon request: 5000K.

### LED DRIVERS:

- Factory programmable constant current LED power supply.
- Multiple standard drive current outputs (factory set by Mercury) are cataloged with their corresponding lumen package offerings. Upon request, custom drive current outputs and lumen packages are available.
- Note: Certain cataloged lumen packages may be provided with a non-programmable constant current LED power supply at Mercury's discretion. Contact factory if critical.
- Universal voltage input, 120V-277V, 50HZ-60HZ.
- Specification grade continuous dimming capability down to 1% on 0-10V dimming controls.

### TUNABLE WHITE OPTION:

- Field tunable range 2700K through 6500K.
- 80CRI.

### LED LUMEN PACKAGES:

- Cataloged standard lumen packages. See attached chart for full details.
- Custom lumen packages pre-set are optional with programmable drivers only. Contact factory for details.

### HOUSING:

- Fabricated from heavy gauge code grade cold rolled steel with a white polyester powder coating finish for long lasting durability.
- Housing ends are welded into place.
- Sufficient electrical knockouts are provided on the housing back and ends.

### DIFFUSER:

- Flat profile snap-in style design.
- Extruded from custom formulated high transmission acrylic material.
- Linear ribbing for high LED performance.
- Optional white acrylic diffuser. Contact factory for full details.

### STANDBY LIGHTING OPTION:

- Self contained module 10W or 12W as specified. Battery backup upon loss of power. Available 4Ft. and 8Ft. modules only.

### OPTIONAL INTEGRAL LIGHTING CONTROLS:

- Self-contained motion sensors mount directly to luminaire.
- Passive infrared (PIF) technology for individual luminaire control.
- On/Off control with optional delay features.
- See ordering matrix for available sensors.
- System lighting controls available. Contact factory.

### INSTALLATIONS:

- Intended to be wall mounted with or without Wall Mount Brackets.
- Electrical entry through provided knockouts on the housing back.
- On request, end knockouts can be provided for surface conduit entry.

### CERTIFICATE OF SAFETY COMPLIANCE AND LISTINGS:

- Luminaire: UL and CUL listed 1598 and bears their label. Suitable for damp locations.

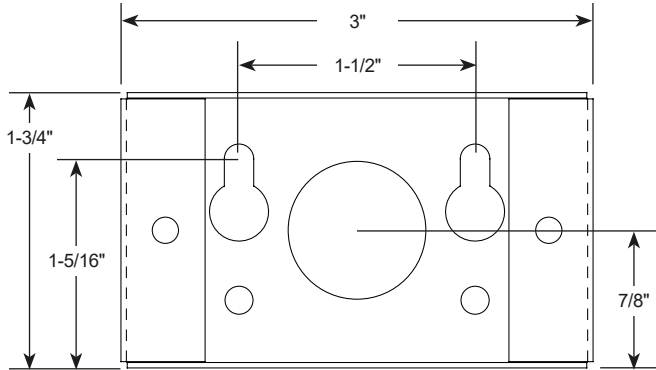
### WARRANTY:

- 5-year limited warranty is standard. Special 10-year warranty available on a job-to-job basis. Complete LED warranty terms available at [mercltg.com](http://mercltg.com).
- Actual performance may differ as a result of end-user environment and application.
- Most LED luminaires are suitable to operate in ambient temperatures from -20C (-4F) to 25C (77F).
- The following exclusions apply: Luminaires with standby lighting option, integral lighting controls options, or wireless control options. Consult factory.
- LM-79 testing was measured under a controlled 25C (77F) ambient operating temperature.



## LW3-WM SERIES

### WALL MOUNT BRACKET DETAIL



### PHOTOMETRICS

All photometric reports are available at [mercltg.com](http://mercltg.com).

### LUMEN PACKAGE - HTA LENS

Series	Nominal Length (FT)	Nominal Lumen Package	Color	Fixture Power (W)	Delivered Lumens	Fixture LPW
LW3	2					
		2100	3000K	16	2012	126
		2100	3500K	16	2071	129
		2100	4000K	16	2137	134
		2100	5000K	16	2012	134
		2300	3000K	18	2220	123
		2300	3500K	18	2285	127
		2300	4000K	18	2358	131
		2300	5000K	18	2361	131
		2500	3000K	19	2374	125
		2500	3500K	19	2444	129
		2500	4000K	19	2522	133
		2500	5000K	19	2526	133
		3200	3000K	25	3026	121
		3200	3500K	25	3119	125
		3200	4000K	25	3219	129
		3200	5000K	25	3230	129

Series	Nominal Length (FT)	Nominal Lumen Package	Color	Fixture Power (W)	Delivered Lumens	Fixture LPW
LW3	4					
		2100	3000K	15	2029	135
		2100	3500K	15	2083	139
		2100	4000K	15	2145	143
		2100	5000K	15	2145	143
		3800	3000K	28	3604	129
		3800	3500K	28	3706	132
		3800	4000K	28	3825	137
		3800	5000K	28	3826	137
		4500	3000K	34	4285	126
		4500	3500K	34	4409	134
		4500	4000K	34	4551	133
		4500	5000K	34	4556	134
		5000	3000K	38	4747	125
		5000	3500K	38	4887	129
		5000	4000K	38	5045	133
		5000	5000K	38	5054	133
		6300	3000K	50	5953	119
		6300	3500K	50	6136	123
		6300	4000K	50	6333	127
		6300	5000K	50	6353	127

Series	Nominal Length (FT)	Nominal Lumen Package	Color	Fixture Power (W)	Delivered Lumens	Fixture LPW
LW3	8					
		7600	3000K	56	7208	129
		7600	3500K	56	7413	132
		7600	4000K	56	7651	137
		7600	5000K	56	7652	137
		12,000	3000K	100	11,906	119
		12,000	3500K	100	12,272	123
		12,000	4000K	100	12,666	127
		12,000	5000K	100	12,706	127

Actual wattage may differ by +/- 5% when operating between 120V-277V +/- 10%.

